

AVAILABLE

FREEWAY OFF-RAMP FRONTAGE

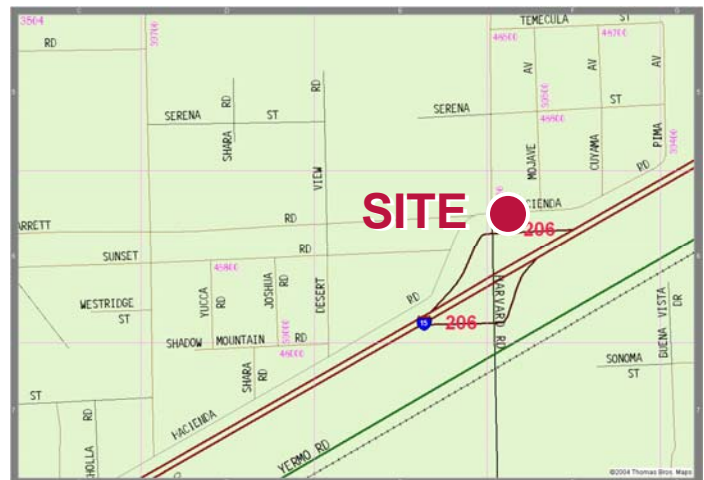
Interstate 15 at Harvard Road

± 3.79 Acres Commercial Zone



PARCEL FEATURES

- Commercial Zone
- Interstate 15 On/Off Ramps
- FREEWAY VISIBILITY
- Flat—Ready to Build
- APN: 0539-223-04
- San Bernardino Thomas Guide Page 3504 F6
- Offering Price: \$500,000.00



Commercial Real Estate Services, Worldwide.

No warranty, express or implied, is made as to the accuracy of the information contained herein. This information is submitted subject to errors, omissions, change of price, rental or other conditions, withdrawal without notice, and is subject to any special listing conditions imposed by our principals. Cooperating brokers, buyers, tenants and other parties who receive this document should not rely on it, but should use it as a starting point of analysis, and should independently confirm the accuracy of the information contained herein through a due diligence review of the books, records, files and documents that constitute reliable sources of the information described herein.

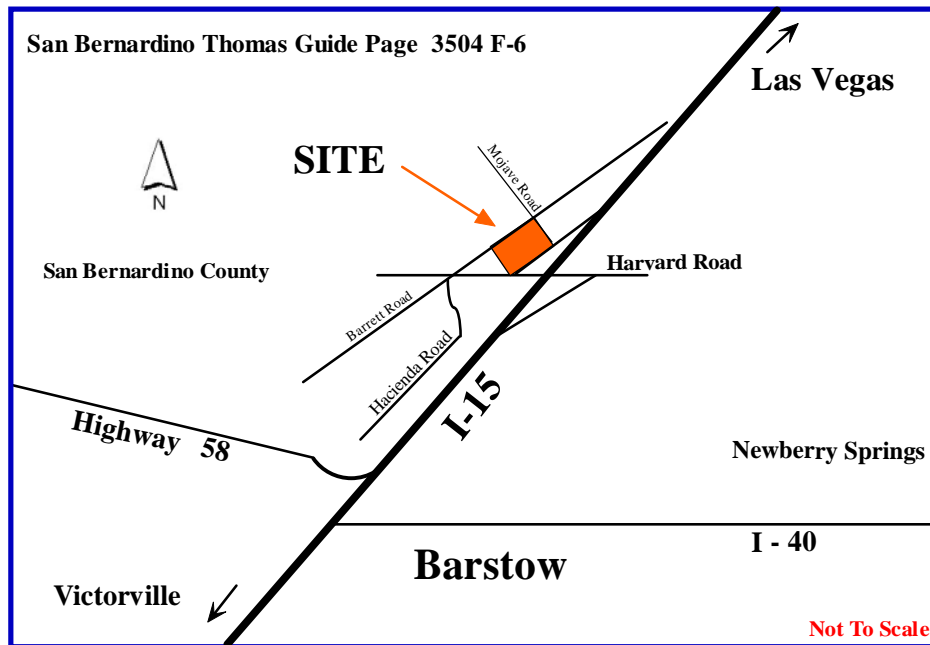
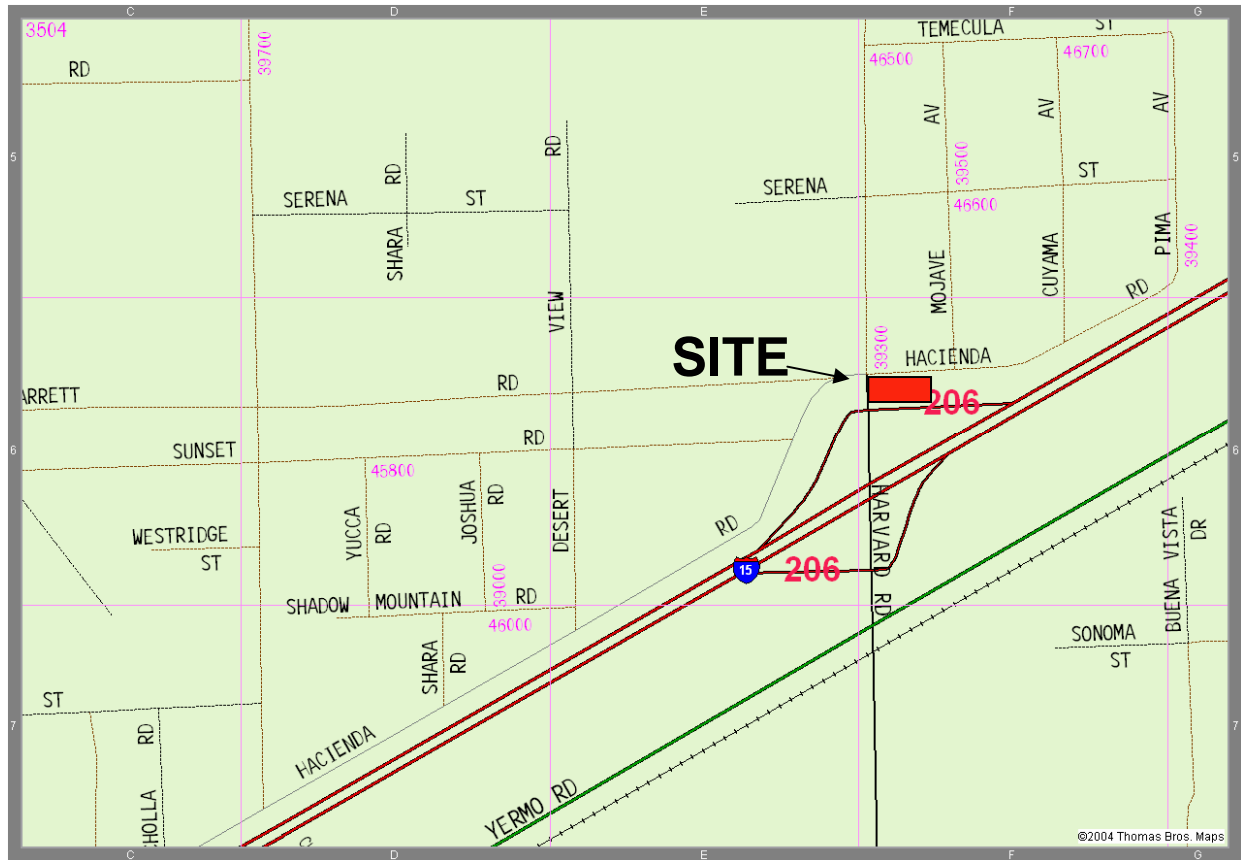
For information, please contact your exclusive listing agent

Scott Lisk
 Senior Vice President
 951-346-0805
 slisk@naicapital.com

2280 Market Street, Suite 150
 Riverside, California 92501
 tel 951 346 0800
 fax 951 346 0801

± 3.79 Acres - Interstate 15 Frontage

North side of I-15 @ SEC Harvard Road at Hacienda Road



Commercial Real Estate Services, Worldwide.

No warranty, express or implied, is made as to the accuracy of the information contained herein. This information is submitted subject to errors, omissions, change of price, rental or other conditions, withdrawal without notice, and is subject to any special listing conditions imposed by our principals. Cooperating brokers, buyers, tenants and other parties who receive this document should not rely on it, but should use it as a starting point of analysis, and should independently confirm the accuracy of the information contained herein through a due diligence review of the books, records, files and documents that constitute reliable sources of the information described herein.

For information, please contact your exclusive listing agent

Scott Lisk
Senior Vice President
951-346-0805
slisk@naicapital.com

2280 Market Street, Suite 150
Riverside, California 92501
tel 951 346 0800
fax 951 346 0801

± 3.79 Acres - Interstate 15 Frontage Commercial Zone

Land Use Zoning Districts

- | | | |
|------------------------------|---------------------------|----------------------------|
| AG – Agriculture | CS – Service Commercial | RC – Resource Conservation |
| CG – General Commercial | FW – Floodway | RL – Rural Living |
| CH – Highway Commercial | IC – Community Industrial | RM – Multiple Residential |
| CN – Neighborhood Commercial | IN – Institutional | RS – Single Residential |
| CO – Office Commercial | IR – Regional Industrial | SD – Special Development |
| CR – Rural Commercial | OS – Open Space | SP – Specific Plan |

San Bernardino County Land Use Plan GENERAL PLAN Proposed Land Use Zoning Districts

SCALE 1:14,400
1 inch on the map represents 1,200 feet on the ground



Commercial Real Estate Services, Worldwide.

No warranty, express or implied, is made as to the accuracy of the information contained herein. This information is submitted subject to errors, omissions, change of price, rental or other conditions, withdrawal without notice, and is subject to any special listing conditions imposed by our principals. Cooperating brokers, buyers, tenants and other parties who receive this document should not rely on it, but should use it as a starting point of analysis, and should independently confirm the accuracy of the information contained herein through a due diligence review of the books, records, files and documents that constitute reliable sources of the information described herein.

For information, please contact your exclusive listing agent

Scott Lisk
Senior Vice President
951-346-0805
slisk@naicapital.com

2280 Market Street, Suite 150
Riverside, California 92501
tel 951 346 0800
fax 951 346 0801

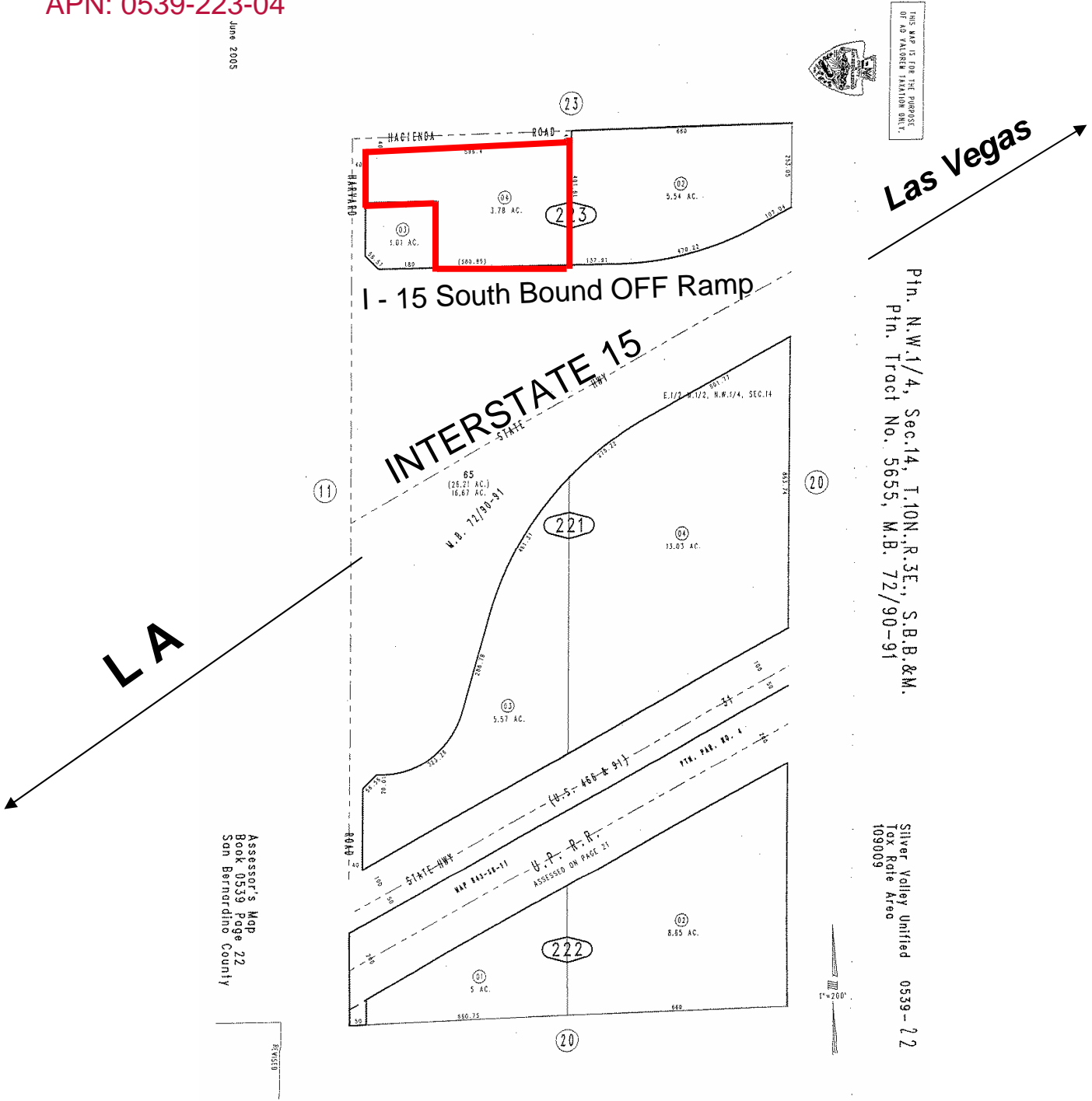
± 3.79 Acres in San Bernardino County

North side of I-15 @ SEC Harvard Road at Hacienda Road

Harvard Road Freeway Overpass / On – Off Ramp

APN: 0539-223-04

June 2005



Las Vegas ↗

Ptn. N.W. 1/4, Sec. 14, T. 10N., R. 3E., S.B.B. & M.
 Ptn. Tract No. 5655, M.B. 72/90-91

Silver Valley Unified 0539-22
 Tax Rate Area 109009

LA ↙

Assessor's Map
 Book 0539 Page 22
 San Bernardino County



For information, please contact your exclusive listing agent

Scott Lisk
 Senior Vice President
 951-346-0805
 slisk@naicapital.com

2280 Market Street, Suite 150
 Riverside, California 92501
 tel 951 346 0800
 fax 951 346 0801

No warranty, express or implied, is made as to the accuracy of the information contained herein. This information is submitted subject to errors, omissions, change of price, rental or other conditions, withdrawal without notice, and is subject to any special listing conditions imposed by our principals. Cooperating brokers, buyers, tenants and other parties who receive this document should not rely on it, but should use it as a starting point of analysis, and should independently confirm the accuracy of the information contained herein through a due diligence review of the books, records, files and documents that constitute reliable sources of the information described herein.